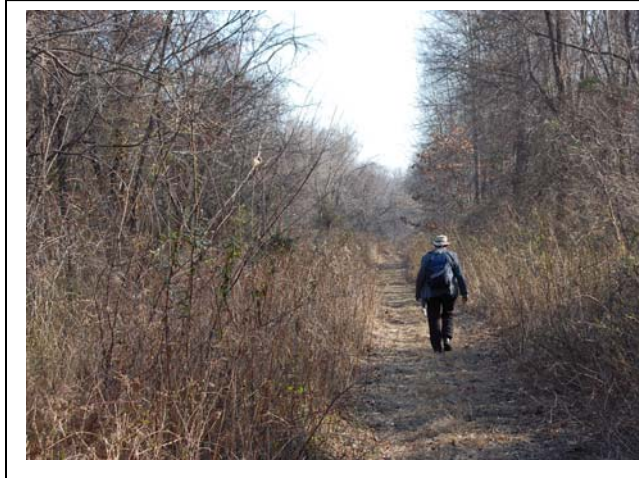


A FEASIBILITY STUDY for the  
**Schuylkill River West Trail**

**Lower Merion Township  
West Conshohocken Borough  
Upper Merion Township  
Bridgeport Borough**

**Montgomery County, Pennsylvania**



**Prepared for:**

Lower Merion Township  
West Conshohocken Borough  
Upper Merion Township  
Bridgeport Borough

**March 13, 2009**

**Prepared by:**

Campbell Thomas & Co. Architects  
1504 South St. / Philadelphia, PA 19146-1636  
215-545-1076 / [www.campbellthomas.com](http://www.campbellthomas.com)

**with:**

Arora and Associates, PC, Consulting Engineers  
Brenton Associates, Inc., Landscape Architects

Feasibility Study for the

# Schuylkill River West Trail

in the Townships of Lower and Upper Merion  
and the Boroughs of Bridgeport and West Conshohocken

Montgomery County, PA  
(with a link to Falls Bridge in Fairmount Park)



This project was financed in part by a grant from the Community Conservation Partnerships Program, Keystone Recreation, Park and Conservation Fund, under the administration of the Pennsylvania Department of Conservation and Natural Resources, Bureau of Recreation and Conservation. Additional funding was provided by Lower and Upper Merion Townships, West Conshohocken Borough, and Bridgeport Borough

**DCNR Project Numbers:**

BRC-TAG-11-193 (Bridgeport)  
BRC-TAG-12-245 (Lower and Upper Merion and West Conshohocken)

The views expressed herein are those of the author(s) and do not necessarily reflect those of the Pennsylvania Department of Natural Resources, nor any of their sub-agencies.

# Table of Contents

<b>I. Executive Summary</b> .....	<b>3</b>
A. Background.....	3
B. Goals and Objectives of this Study.....	3
C. Trail Recommendations.....	3
D. Implementation Recommendations.....	4
E. Opinion of Probable Cost.....	5
<b>II. Introduction</b> .....	<b>6</b>
A. Project Scope.....	6
B. Project Partners.....	6
C. Regional Context.....	6
D. Natural Environment.....	8
E. Goals and Objectives.....	9
F. Trail Benefits.....	9
G. Projected Uses.....	10
H. Examples of other Long-Distance Trails.....	12
<b>III. Recommendations</b> .....	<b>16</b>
A. Trail Characteristics and Alignment.....	16
B. Trail and Trail Head Facilities.....	47
C. Special Urban Design Considerations.....	49
D. Determination of Feasibility.....	50
E. Proposed Easements and Property Acquisition.....	51
F. Operation and Maintenance.....	52
<b>IV. Implementation Plan</b> .....	<b>58</b>
A. Phasing Plan – Prioritization of Recommended Improvements.....	58
B. Opinion of Probable Acquisition and Construction Costs.....	60
C. Opinion of Management and Maintenance Costs.....	61
D. Potential Funding Sources.....	61
E. Recommendations and Responsibilities for Future Action.....	62
<b>V. Inventory and Methodology</b> .....	<b>63</b>
A. Existing Plans and Policies.....	63
B. Field Survey.....	64
C. Physical Conditions.....	65
D. Trail Alignment Analysis.....	67
E. Analysis Maps.....	68
F. Public Participation.....	68
G. Stakeholder Interviews.....	69
H. Demand and Usage Analysis.....	69
<b>VI. Appendix</b> .....	<b>70</b>
0. <b>Glossary of terms</b> used in this report	
1. List of Potential Funding Sources	
2. List of Historic and Cultural Resources	
3. Map Showing Study Area in Context of Southeastern Pennsylvania	
4. Maps Showing Proposed Trail Alignments, Ownership, Reach Numbers, and Priorities	
5. Proposed Trail Cross Sections	
6. Detailed Preliminary Opinion of Probable Costs	
7. List of Key Persons Interviewed	
8. List of Property Owners Interviewed	
9. Newspaper Articles about the Schuylkill River West Trail study	
10. <b>Attached CD:</b> Complete Report, plus 32 Detailed Alignment Maps (1' = 200'), Natural Resource Inventory and Assessment	